

PETER LARGE

ESTATE AGENTS

## 20 Woodland Park, Colwyn Bay, Conwy, LL29 7HA

£270,000

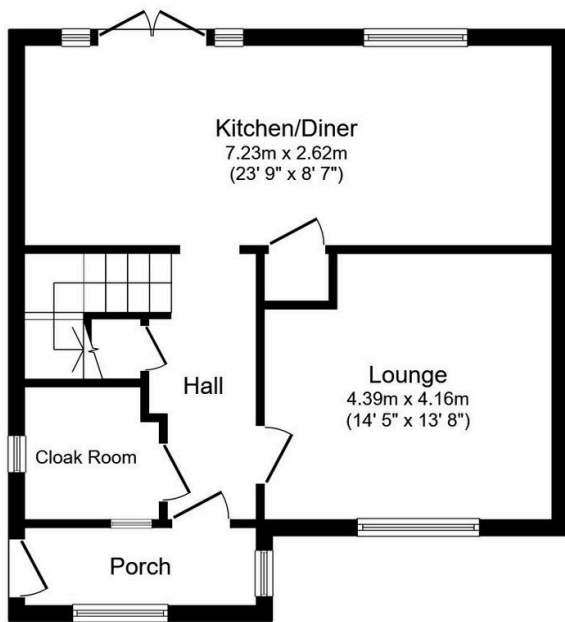
🛏️ 3 🚿 2 🚽 2



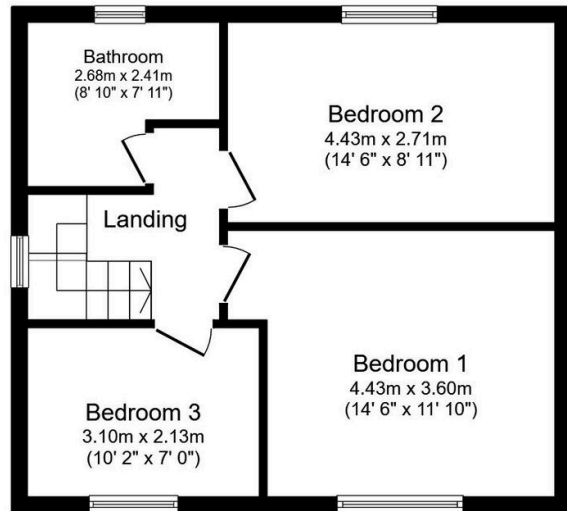
**SIGNIFICANT REDUCTION** An elevated family home with the most breathtaking views over the rooftops of Colwyn Bay and out to sea. This semi detached house is filled with natural light, offering bright, well maintained and spacious accommodation including lounge, kitchen diner, three bedrooms and large bathroom. The exterior benefits from a superb timber garden room with a pitched slate roof, a single garage and terraced gardens to the front and rear.

## Key Features

- Semi detached house
- Sought after area
- Double glazing
- Terraced garden
- Council tax band - D
- Glorious views
- Three bedrooms
- Rustic garden room
- EPC rating - D
- Freehold



**Ground Floor**



**First Floor**

Total floor area 95.1 m<sup>2</sup> (1,023 sq.ft.) approx

This plan is for illustration purposes only and may not be representative of the property. Plan not to scale. Powered by PropertyBox